

**ADVANCED SUBSIDIARY GCE
MATHEMATICS (MEI)**

4751/01

Introduction to Advanced Mathematics (C1)

WEDNESDAY 9 JANUARY 2008

Afternoon

Time: 1 hour 30 minutes

Additional materials: Answer Booklet (8 pages)
MEI Examination Formulae and Tables (MF2)

INSTRUCTIONS TO CANDIDATES

- Write your name, centre number and candidate number in the spaces provided on the answer booklet.
- Read each question carefully and make sure you know what you have to do before starting your answer.
- Answer **all** the questions.
- You are **not** permitted to use a calculator in this paper.
- Final answers should be given to a degree of accuracy appropriate to the context.

INFORMATION FOR CANDIDATES

- The number of marks is given in brackets [] at the end of each question or part question.
- The total number of marks for this paper is 72.
- You are advised that an answer may receive **no marks** unless you show sufficient detail of the working to indicate that a correct method is being used.



WARNING

**You are not allowed to use
a calculator in this paper.**

This document consists of 4 printed pages.

Section A (36 marks)

- 1 Make v the subject of the formula $E = \frac{1}{2}mv^2$. [3]
- 2 Factorise and hence simplify $\frac{3x^2 - 7x + 4}{x^2 - 1}$. [3]
- 3 (i) Write down the value of $(\frac{1}{4})^0$. [1]
(ii) Find the value of $16^{-\frac{3}{2}}$. [3]
- 4 Find, algebraically, the coordinates of the point of intersection of the lines $y = 2x - 5$ and $6x + 2y = 7$. [4]
- 5 (i) Find the gradient of the line $4x + 5y = 24$. [2]
(ii) A line parallel to $4x + 5y = 24$ passes through the point $(0, 12)$. Find the coordinates of its point of intersection with the x -axis. [3]
- 6 When $x^3 + kx + 7$ is divided by $(x - 2)$, the remainder is 3. Find the value of k . [3]
- 7 (i) Find the value of 8C_3 . [2]
(ii) Find the coefficient of x^3 in the binomial expansion of $(1 - \frac{1}{2}x)^8$. [2]
- 8 (i) Write $\sqrt{48} + \sqrt{3}$ in the form $a\sqrt{b}$, where a and b are integers and b is as small as possible. [2]
(ii) Simplify $\frac{1}{5 + \sqrt{2}} + \frac{1}{5 - \sqrt{2}}$. [3]
- 9 (i) Prove that 12 is a factor of $3n^2 + 6n$ for all even positive integers n . [3]
(ii) Determine whether 12 is a factor of $3n^2 + 6n$ for all positive integers n . [2]

Section B (36 marks)

10 (i)

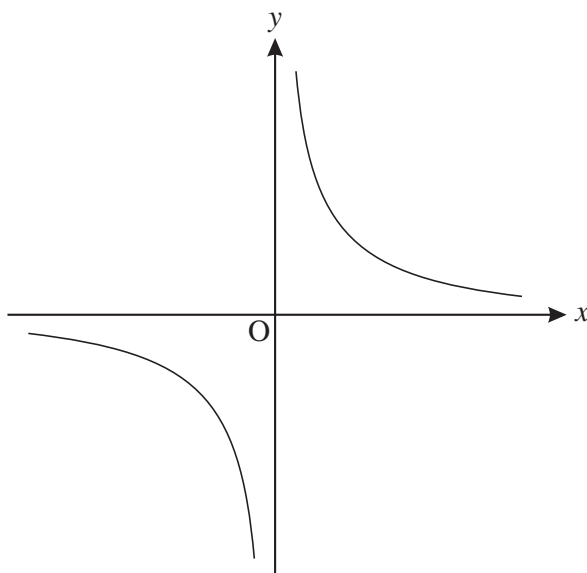


Fig. 10

Fig. 10 shows a sketch of the graph of $y = \frac{1}{x}$.

Sketch the graph of $y = \frac{1}{x-2}$, showing clearly the coordinates of any points where it crosses the axes. [3]

(ii) Find the value of x for which $\frac{1}{x-2} = 5$. [2]

(iii) Find the x -coordinates of the points of intersection of the graphs of $y = x$ and $y = \frac{1}{x-2}$. Give your answers in the form $a \pm \sqrt{b}$. [6]

Show the position of these points on your graph in part (i).

11 (i) Write $x^2 - 5x + 8$ in the form $(x - a)^2 + b$ and hence show that $x^2 - 5x + 8 > 0$ for all values of x . [4]

(ii) Sketch the graph of $y = x^2 - 5x + 8$, showing the coordinates of the turning point. [3]

(iii) Find the set of values of x for which $x^2 - 5x + 8 > 14$. [3]

(iv) If $f(x) = x^2 - 5x + 8$, does the graph of $y = f(x) - 10$ cross the x -axis? Show how you decide. [2]

[Question 12 is printed overleaf.]

12 A circle has equation $x^2 + y^2 - 8x - 4y = 9$.

(i) Show that the centre of this circle is C (4, 2) and find the radius of the circle. [3]

(ii) Show that the origin lies inside the circle. [2]

(iii) Show that AB is a diameter of the circle, where A has coordinates (2, 7) and B has coordinates (6, -3). [4]

(iv) Find the equation of the tangent to the circle at A. Give your answer in the form $y = mx + c$. [4]

Permission to reproduce items where third-party owned material protected by copyright is included has been sought and cleared where possible. Every reasonable effort has been made by the publisher (OCR) to trace copyright holders, but if any items requiring clearance have unwittingly been included, the publisher will be pleased to make amends at the earliest possible opportunity.

OCR is part of the Cambridge Assessment Group. Cambridge Assessment is the brand name of University of Cambridge Local Examinations Syndicate (UCLES), which is itself a department of the University of Cambridge.